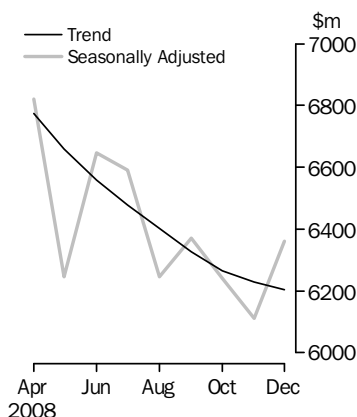


LENDING FINANCE

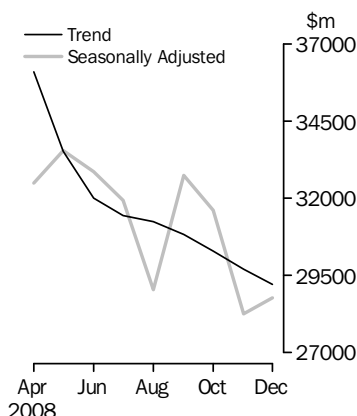
AUSTRALIA

EMBARGO: 11.30AM (CANBERRA TIME) MON 16 FEB 2009

Personal finance



Commercial finance



INQUIRIES

For further information about these and related statistics, contact the National Information and Referral Service on 1300 135 070 or Philip Beresford on Canberra (02) 6252 6052.

KEY FIGURES

	Nov 2008 \$m	Dec 2008 \$m	Nov 2008 to Dec 2008 % change
TREND ESTIMATES			
Housing finance for owner occupation	12 686	12 897	1.7
Personal finance	6 228	6 203	-0.4
Commercial finance	29 698	29 202	-1.7
Lease finance	530	528	-0.4
SEASONALLY ADJUSTED ESTIMATES			
Housing finance for owner occupation	12 614	13 506	7.1
Personal finance	6 111	6 361	4.1
Commercial finance	28 258	28 775	1.8
Lease finance	521	547	5.1

KEY POINTS

DECEMBER 2008 COMPARED WITH NOVEMBER 2008:

HOUSING FINANCE FOR OWNER OCCUPATION

- The total value of owner occupied housing commitments excluding alterations and additions increased in trend terms (up 1.7%) and the seasonally adjusted series rose 7.1%.

PERSONAL FINANCE

- The trend series for the value of total personal finance decreased 0.4%, with falls in both fixed lending commitments (down 0.8%) and revolving credit commitments (down 0.1%).
- The seasonally adjusted series for the value of total personal finance commitments increased 4.1%, due mainly to an increase in fixed lending commitments (up 8.9%). Revolving credit commitments were up slightly (0.7%).

COMMERCIAL FINANCE

- The trend series for the value of total commercial finance commitments decreased 1.7%, due to falls in both revolving credit commitments (down 2.5%) and fixed lending commitments (down 1.2%).
- The seasonally adjusted series for the value of total commercial finance commitments increased 1.8%, due to a rise in revolving credit commitments (up 40.4%), while fixed lending commitments fell (down 13.0%).

LEASE FINANCE

- Lease finance commitments (trend) decreased 0.4% and the seasonally adjusted series rose 5.1%.

NOTES

FORTHCOMING ISSUES

<i>ISSUE</i>	<i>RELEASE DATE</i>
January 2009	16 March 2009
February 2009	14 April 2009
March 2009	14 May 2009
April 2009	15 June 2009
May 2009	13 July 2009
June 2009	11 August 2009

.....

REVISIONS

Revisions were made to Housing, Personal and Commercial Finance to include the latest available administrative and survey data.

.....

ABBREVIATIONS

- \$m million dollars
- ABS Australian Bureau of Statistics
- n.e.c. not elsewhere classified
- RBA Reserve Bank of Australia

Brian Pink
Australian Statistician

CONTENTS

page

Time Series Spreadsheets 4

ANALYSIS

Summary of findings 5

TABLES

1 Finance commitments, summary 6

2 Housing and personal finance commitments, by lender, original 7

3 Commercial and lease finance commitments, by lender, original 8

4 Personal finance commitments, by purpose (fixed loans), original 9

5 Personal finance commitments, revolving credit stocks and flows,
original 10

6 Commercial finance commitments, by purpose (fixed loans), original 11

7 Lease and commercial finance commitments, stocks and flows, original 11

8 Finance commitments for housing (owner occupation and
commercial) 12

9 Finance commitments for motor vehicles, original 13

10 Lease finance commitments for motor vehicles, original 14

11 Commercial and lease finance commitments for plant and equipment,
original 15

12 Lease finance commitments for plant and equipment, original 16

OTHER INFORMATION

Explanatory Notes 17

Glossary 21

TIME SERIES DATA

TIME SERIES SPREADSHEETS

Data available free on the ABS web site <<http://www.abs.gov.au>> include:

- longer time series of tables in this publication, and
- the following tables:
 13. Lending Finance Seasonal Factors and Forward Factors for 12 months, By Purpose and Lender: Australia (from January 1985)
 14. Commercial finance commitments (original, seasonally adjusted, trend)
 15. Commercial finance commitments, fixed loans and revolving credit
 16. Commercial finance commitments, fixed loans and revolving credit by lender
 17. Commercial finance commitments, fixed loans by industry
 18. Commercial finance commitments, revolving credit by industry
 - 19 to 26. Commercial finance commitments, fixed loans and revolving credit by state and territory
 27. Lease finance commitments, summary (original, seasonally adjusted, trend)
 28. Lease finance commitments by purpose
 29. Lease finance commitments by purpose and lender
 30. Lease finance commitments by industry
 - 31 to 38. Lease finance commitments by purpose and state and territory
 39. Operating lease finance commitments by purpose
 40. Operating lease finance commitments by lender
 41. Operating lease finance commitments by industry
 - 42 to 49. Operating lease finance commitments by purpose and state and territory
 50. Personal finance commitments, summary (original, seasonally adjusted, trend)
 51. Personal finance commitments, fixed loans and revolving credit
 52. Personal finance commitments, fixed loans and revolving credit by lender
 - 53 to 60. Personal finance commitments, fixed loans and revolving credit by state and territory

SUMMARY OF FINDINGS

HOUSING FINANCE FOR OWNER OCCUPATION

The trend series for the total value of owner occupied housing commitments excluding alterations and additions increased 1.7% and the seasonally adjusted series rose 7.1%.

For further information, please refer to Housing Finance, Australia (cat. no. 5609.0), which was released on 11 February 2009.

PERSONAL FINANCE

In trend terms, the value of total personal finance decreased 0.4% in December 2008 compared with November 2008. Fixed lending commitments were down 0.8%, with revolving credit commitments down 0.1%.

In seasonally adjusted terms, the value of total personal finance commitments increased 4.1% in December 2008. This was due primarily to an increase in fixed lending commitments (up 8.9%). Revolving credit commitments were up slightly (0.7%).

In original terms, fixed lending commitments increased 15.8% (up \$384m) in December 2008 compared with November 2008.

Movements in the original series contributing to this increase were:

- Refinancing, up \$139m (23.7%)
- Total motor vehicles, up \$114m (16.8%)
- Individual residential blocks of land, up \$54m (15.0%)

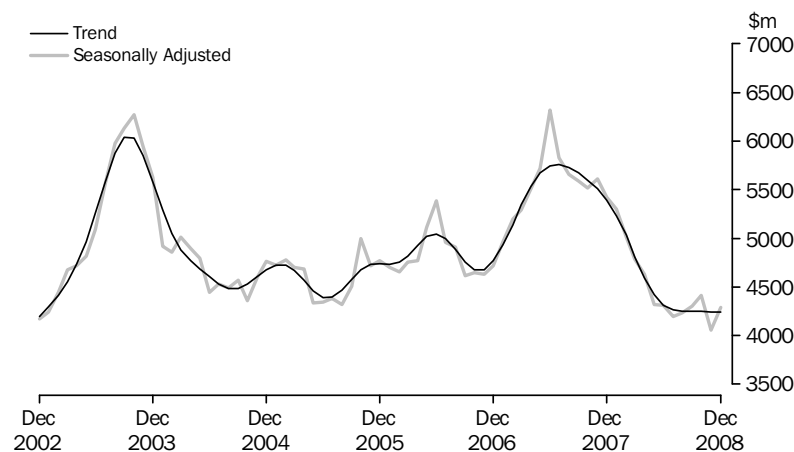
COMMERCIAL FINANCE

The trend series for the value of total commercial finance commitments decreased 1.7% in December 2008 compared with November 2008. This was due to falls in revolving credit commitments (down 2.5%) and fixed lending commitments (down 1.2%).

The seasonally adjusted series for the value of total commercial finance commitments increased 1.8% in December 2008 compared with November 2008. This was due to a rise in revolving credit commitments (up 40.4%), which was largely offset by a fall in fixed lending commitments (down 13.0%).

The value of purchases of dwellings by individuals for rent or resale (trend) decreased 0.2% in December 2008, after a revised decrease of 0.1% in November 2008. The seasonally adjusted series roes 5.8% in December 2008.

PURCHASE OF DWELLINGS BY INDIVIDUALS FOR RENT OR RESALE



LEASE FINANCE

The value of lease finance commitments (trend) decreased 0.4% in December 2008 and the seasonally adjusted series increased 5.1%.

FINANCE COMMITMENTS, Summary

Month	SECURED HOUSING(a)		PERSONAL(b)			COMMERCIAL			LEASE
	Construction and purchase of dwellings(c)	Alterations and additions	Fixed loans(c)	Revolving credit(d)	Total	Fixed loans(c)	Revolving credit(d)	Total	Total
	\$m	\$m	\$m	\$m	\$m	\$m	\$m	\$m	\$m
ORIGINAL									
2007									
December	14 776	389	3 030	3 889	6 919	33 195	15 108	48 303	585
2008									
January	13 468	409	3 102	3 510	6 612	27 820	12 643	40 463	515
February	14 153	482	3 349	3 637	6 986	27 729	13 754	41 483	562
March	13 178	414	3 017	3 319	6 336	20 302	11 901	32 203	546
April	13 807	426	3 081	3 772	6 853	19 471	9 380	28 851	558
May	13 640	456	2 912	3 727	6 640	23 305	11 214	34 520	566
June	12 371	404	3 213	4 082	7 296	25 791	13 595	39 386	754
July	13 231	416	2 987	4 073	7 059	21 797	12 080	33 877	579
August	11 812	375	2 637	3 199	5 835	17 682	11 597	29 279	525
September	11 917	402	2 733	3 547	6 280	20 496	10 763	31 258	507
October	13 030	462	2 796	3 733	6 528	23 308	11 335	34 644	554
November	12 547	441	2 423	3 393	5 816	19 388	8 132	27 521	468
December	14 315	446	2 807	3 741	6 547	20 607	12 933	33 540	604
SEASONALLY ADJUSTED									
2007									
December	15 239	428	3 247	4 062	7 309	31 609	13 134	44 743	568
2008									
January	15 585	473	3 328	3 875	7 203	34 969	15 083	50 051	620
February	14 567	469	3 291	4 048	7 339	28 898	14 446	43 344	595
March	13 939	430	3 189	3 286	6 475	23 958	13 830	37 788	579
April	13 277	408	3 102	3 718	6 820	21 565	10 932	32 497	593
May	12 593	410	2 656	3 589	6 244	21 694	11 862	33 556	544
June	12 473	402	3 009	3 639	6 648	21 747	11 102	32 850	588
July	12 340	397	2 878	3 712	6 590	20 642	11 283	31 925	556
August	12 204	400	2 796	3 448	6 245	17 109	11 939	29 048	539
September	12 052	420	2 765	3 606	6 371	21 375	11 362	32 737	516
October	12 411	426	2 726	3 515	6 241	20 793	10 809	31 602	538
November	12 614	448	2 546	3 564	6 111	20 392	7 867	28 258	521
December	13 506	448	2 773	3 588	6 361	17 733	11 042	28 775	547
TREND									
2007									
December	15 354	453	3 284	3 891	7 175	30 325	15 031	45 357	608
2008									
January	15 040	451	3 284	3 870	7 153	29 845	14 567	44 412	602
February	14 559	445	3 255	3 801	7 056	28 421	13 809	42 230	595
March	13 980	435	3 202	3 716	6 917	26 271	13 011	39 282	588
April	13 380	422	3 130	3 645	6 775	23 774	12 322	36 096	580
May	12 853	410	3 053	3 606	6 659	21 668	11 862	33 529	572
June	12 453	402	2 969	3 590	6 560	20 465	11 539	32 004	562
July	12 252	401	2 889	3 589	6 478	20 117	11 313	31 430	552
August	12 233	408	2 819	3 584	6 403	20 095	11 137	31 233	543
September	12 325	418	2 759	3 567	6 325	19 975	10 863	30 839	536
October	12 485	427	2 710	3 555	6 265	19 786	10 503	30 289	532
November	12 686	437	2 675	3 553	6 228	19 553	10 145	29 698	530
December	12 897	446	2 653	3 550	6 203	19 309	9 893	29 202	528

(a) For owner occupation.

(d) New and increased credit limits during the month. Includes credit cards.

(b) Includes unsecured housing finance for owner occupation.

(c) Includes refinancing.

HOUSING AND PERSONAL FINANCE COMMITMENTS, By Lender: Original

Month	HOUSING FINANCE(a)					PERSONAL FINANCE(b)				
	Banks	Permanent building societies	Wholesale lenders n.e.c.	Other lenders	Total	Banks	Credit co-operatives	Finance companies	Other lenders	Total
	\$m	\$m	\$m	\$m	\$m	\$m	\$m	\$m	\$m	\$m
2007										
December	12 802	370	957	648	14 776	5 464	261	328	867	6 919
2008										
January	11 769	335	828	535	13 468	5 151	255	344	862	6 612
February	12 322	356	854	622	14 153	5 614	269	356	747	6 986
March	11 610	279	737	552	13 178	5 042	252	322	721	6 336
April	12 214	247	777	569	13 807	5 451	243	333	826	6 853
May	12 289	204	616	531	13 640	5 261	251	334	793	6 640
June	11 142	176	581	472	12 371	5 947	233	351	765	7 296
July	11 953	186	575	518	13 231	5 718	238	319	785	7 059
August	10 787	152	480	394	11 812	4 716	200	300	618	5 835
September	10 899	173	453	392	11 917	5 011	214	336	720	6 280
October	11 901	214	420	496	13 030	5 163	231	325	810	6 528
November	11 611	183	374	380	12 547	4 649	204	264	699	5 816
December	13 341	228	389	357	14 315	5 283	250	327	687	6 547

(a) Secured finance for owner occupation. Excludes alterations and additions.

(b) Includes unsecured housing finance for owner occupation.

COMMERCIAL AND LEASE FINANCE COMMITMENTS, By Lender: **Original**

Month	COMMERCIAL FINANCE					LEASE FINANCE				
	Banks	Money market corporations	Finance companies	Other lenders	Total	Banks	General financiers	Finance companies	Other lessors	Total
	\$m	\$m	\$m	\$m	\$m	\$m	\$m	\$m	\$m	\$m
2007										
December	np	np	383	4 307	48 303	229	161	80	116	585
2008										
January	np	np	290	2 749	40 463	169	168	67	112	515
February	36 107	np	401	np	41 483	206	138	77	140	562
March	28 457	np	354	np	32 203	189	157	74	126	546
April	25 167	np	458	np	28 851	210	146	68	134	558
May	np	np	433	2 654	34 520	198	145	80	143	566
June	34 424	np	440	np	39 386	322	183	101	147	754
July	30 352	np	325	np	33 877	186	188	64	142	579
August	25 909	np	278	np	29 279	147	202	46	131	525
September	np	np	269	2 828	31 258	180	155	46	126	507
October	30 916	np	270	np	34 644	212	164	47	130	554
November	24 782	np	312	np	27 521	187	123	45	113	468
December	28 597	np	284	np	33 540	278	140	52	135	604

np not available for publication but included in totals where applicable, unless otherwise indicated

4

PERSONAL FINANCE COMMITMENTS, By Purpose (Fixed Loans): Original

<i>Month</i>	<i>New motor cars and station wagons</i>	<i>Used motor cars and station wagons</i>	<i>Total motor vehicles(a)</i>	<i>Individual residential blocks of land</i>	<i>Unsecured finance for owner occupation(b)</i>	<i>Debt consolidation</i>	<i>Refinancing</i>	<i>Other(c)</i>	<i>Total</i>
	\$m	\$m	\$m	\$m	\$m	\$m	\$m	\$m	\$m
2007									
December	321	398	835	440	34	300	661	760	3 030
2008									
January	351	449	911	403	32	306	716	734	3 102
February	361	453	932	417	38	376	837	750	3 349
March	321	411	842	385	33	331	734	692	3 017
April	325	432	877	401	34	337	692	741	3 081
May	323	431	871	337	37	322	601	745	2 912
June	340	409	865	417	34	312	778	808	3 213
July	310	427	855	376	37	336	632	750	2 987
August	277	402	790	334	30	285	543	655	2 637
September	300	427	848	354	35	289	581	626	2 733
October	301	417	831	352	36	308	653	615	2 796
November	242	343	677	360	31	262	587	506	2 423
December	300	386	791	414	33	284	727	558	2 807

(a) Includes motorcycles and other motor vehicles.

(b) Includes alterations and additions.

(c) Includes boats, caravans and trailers, household goods, travel and holidays and other purposes.

PERSONAL FINANCE COMMITMENTS, Revolving Credit Stocks and Flows: **Original**

Month	NEW AND INCREASED CREDIT LIMITS			CANCELLATIONS AND REDUCTIONS	CREDIT AT END OF MONTH	
	<i>Secured</i>	<i>Unsecured</i>	Total	<i>Total(a)</i>	<i>Total limits(a)</i>	<i>Credit used</i>
	\$m	\$m	\$m	\$m	\$m	\$m
2007						
December	1 586	2 303	3 889	2 099	248 989	110 268
2008						
January	1 368	2 141	3 510	1 781	250 721	110 540
February	1 513	2 124	3 637	1 921	252 396	111 500
March	1 387	1 932	3 319	1 558	254 158	111 573
April	1 513	2 259	3 772	1 943	255 972	112 439
May	1 609	2 118	3 727	1 872	257 807	113 075
June	1 858	2 225	4 082	2 010	259 879	115 233
July	1 529	2 544	4 073	2 075	260 967	115 084
August	1 335	1 864	3 199	1 644	262 513	115 345
September	1 353	2 194	3 547	2 045	264 514	115 860
October	1 477	2 256	3 733	2 220	266 009	116 668
November	1 245	2 148	3 393	1 923	266 504	117 023
December	1 499	2 242	3 741	2 170	268 025	117 247

(a) These figures sometimes reflect a rebasing of the data by one or more lenders without adjustment to earlier periods' commitments or cancellations.

6

COMMERCIAL FINANCE COMMITMENTS, By Purpose (Fixed Loans): Original

Month	Construction finance	Purchase of real property	Wholesale finance	Purchase of plant and equipment	Refinancing	Other	Total	Commitments not drawn at end of month
	\$m	\$m	\$m	\$m	\$m	\$m	\$m	\$m
2007								
December	2 139	9 299	869	1 481	4 163	15 244	33 195	52 146
2008								
January	1 625	7 178	1 164	903	1 154	15 796	27 820	56 532
February	1 707	8 357	1 266	1 145	3 956	11 298	27 729	58 886
March	978	7 130	1 558	1 091	2 579	6 966	20 302	55 478
April	1 444	7 463	np	1 314	2 635	np	19 471	54 769
May	1 683	8 072	891	1 182	1 684	9 794	23 305	53 352
June	2 344	7 412	915	1 530	3 656	9 934	25 791	54 480
July	2 896	6 636	1 064	1 149	2 045	8 006	21 797	54 417
August	2 031	6 402	1 005	1 097	1 166	5 981	17 682	53 065
September	1 169	7 319	650	1 144	1 297	8 917	20 496	50 900
October	1 885	6 759	858	1 353	2 356	10 098	23 308	49 500
November	1 033	6 132	1 077	1 170	1 751	8 227	19 388	46 671
December	1 791	6 101	769	1 268	1 858	8 819	20 607	50 041

np not available for publication but included in totals where applicable, unless otherwise indicated

7

LEASE AND COMMERCIAL FINANCE COMMITMENTS, Stocks and Flows: Original

Month	LEASE FINANCE		COMMERCIAL REVOLVING CREDIT			
	Total commitments	Commitments not drawn at end of month	New and increased credit limits	Cancellations and reductions(a)	Total credit limits at end of month(a)	Credit used at end of month
	\$m	\$m	\$m	\$m	\$m	\$m
2007						
December	585	449	15 108	12 941	393 390	223 888
2008						
January	515	452	12 643	18 908	387 050	225 266
February	562	404	13 754	16 832	383 803	227 129
March	546	359	11 901	8 662	387 197	224 341
April	558	252	9 380	12 442	383 939	226 334
May	566	258	11 214	11 429	383 330	228 188
June	754	245	13 595	13 435	384 761	229 413
July	579	253	12 080	13 313	383 465	226 650
August	525	253	11 597	9 085	386 115	230 124
September	507	266	10 763	12 537	384 627	232 593
October	554	212	11 335	13 655	382 879	238 707
November	468	212	8 132	10 193	380 802	238 685
December	604	229	12 933	16 574	376 884	235 621

(a) These figures sometimes reflect a rebasing of the data by one or more lenders without adjustment to earlier periods' commitments or cancellations.

FINANCE COMMITMENTS, For Housing (Owner Occupation and Commercial)

Month	OWNER OCCUPATION (SECURED FINANCE)				OWNER OCCUPATION (UNSECURED FINANCE)	COMMERCIAL FINANCE(a)			ALL HOUSING FINANCE
	Construction of dwellings	Purchase of new dwellings	Purchase of established dwellings	Alterations and additions	Total(b)	Construction of dwellings for rent or resale	Purchase of dwellings by individuals for rent or resale	Purchase of dwellings by others for rent or resale	Total
	\$m	\$m	\$m	\$m	\$m	\$m	\$m	\$m	\$m
ORIGINAL									
2007									
December	1 052	613	13 111	389	34	701	5 025	762	21 686
2008									
January	970	497	12 001	409	32	699	4 434	631	19 674
February	1 093	568	12 492	482	38	544	4 780	929	20 926
March	1 013	473	11 692	414	33	558	4 527	624	19 333
April	1 152	502	12 152	426	34	544	4 769	639	20 219
May	1 175	490	11 974	456	37	724	4 820	582	20 259
June	1 070	518	10 783	404	34	578	4 860	833	19 080
July	1 153	519	11 559	416	37	888	4 488	798	19 858
August	993	430	10 390	375	30	501	4 106	533	17 358
September	1 011	474	10 432	402	35	396	4 218	588	17 556
October	1 062	529	11 440	462	36	422	4 491	496	18 939
November	909	560	11 078	441	31	301	3 909	530	17 760
December	1 076	673	12 566	446	33	487	4 307	435	20 023
SEASONALLY ADJUSTED									
2007									
December	1 141	637	13 462	428	35	615	5 421	779	22 518
2008									
January	1 146	585	13 854	473	36	926	5 298	754	23 072
February	1 167	576	12 824	469	36	583	5 009	836	21 500
March	1 100	504	12 335	430	34	450	4 783	695	20 330
April	1 155	495	11 627	408	32	597	4 630	705	19 648
May	1 076	446	11 071	410	35	659	4 322	586	18 605
June	1 038	515	10 921	402	35	545	4 312	660	18 426
July	999	477	10 865	397	37	727	4 196	752	18 449
August	977	442	10 785	400	34	523	4 237	554	17 951
September	977	482	10 592	420	34	427	4 303	590	17 827
October	995	506	10 910	426	34	425	4 409	510	18 216
November	978	565	11 070	448	29	389	4 052	539	18 071
December	1 066	640	11 800	448	32	425	4 285	417	19 112
TREND									
2007									
December	1 172	627	13 555	453	36	669	5 390	761	22 664
2008									
January	1 160	585	13 295	451	35	661	5 232	757	22 176
February	1 145	549	12 865	445	35	639	5 031	744	21 454
March	1 128	521	12 331	435	35	618	4 806	726	20 600
April	1 106	498	11 776	422	35	606	4 590	702	19 735
May	1 077	479	11 297	410	35	601	4 422	678	18 998
June	1 042	467	10 944	402	35	593	4 314	656	18 453
July	1 012	466	10 773	401	35	577	4 264	635	18 165
August	994	477	10 761	408	35	541	4 252	611	18 079
September	988	497	10 840	418	34	490	4 252	577	18 096
October	991	524	10 970	427	33	445	4 249	538	18 178
November	1 000	554	11 132	437	32	409	4 245	501	18 310
December	1 012	581	11 303	446	31	385	4 238	463	18 460

(a) Excludes revolving credit.

(b) Includes alterations and additions.

FINANCE COMMITMENTS, For Motor Vehicles: **Original**

Month	PERSONAL FINANCE(a)					COMMERCIAL	LEASE	ALL VEHICLE
	New motor cars and station wagons	Used motor cars and station wagons	Motorcycles	Other motor vehicles	Total	FINANCE (a)	FINANCE	FINANCE
	\$m	\$m	\$m	\$m	\$m	\$m	\$m	\$m
2007								
December	321	398	24	92	835	712	267	1 814
2008								
January	351	449	22	89	911	507	238	1 656
February	361	453	24	94	932	638	272	1 843
March	321	411	22	88	842	586	259	1 687
April	325	432	24	96	877	689	316	1 882
May	323	431	23	94	871	685	306	1 862
June	340	409	23	93	865	750	315	1 930
July	310	427	25	93	855	609	319	1 784
August	277	402	22	88	790	547	267	1 603
September	300	427	27	94	848	656	272	1 776
October	301	417	25	88	831	629	283	1 743
November	242	343	20	72	677	537	251	1 464
December	300	386	20	84	791	585	280	1 655

(a) Excludes revolving credit.

LEASE FINANCE COMMITMENTS, For Motor Vehicles: **Original**

Month	MOTOR CARS AND STATION WAGONS		LIGHT TRUCKS		HEAVY TRUCKS		OTHER MOTOR VEHICLES	ALL VEHICLES
	<i>New</i>	<i>Used</i>	<i>New</i>	<i>Used</i>	<i>New</i>	<i>Used</i>	<i>Total</i>	<i>Total</i>
	\$m	\$m	\$m	\$m	\$m	\$m	\$m	\$m
2007								
December	185	43	11	3	10	np	np	267
2008								
January	162	41	15	3	6	7	4	238
February	179	47	12	6	14	np	np	272
March	174	40	13	4	13	7	9	259
April	191	48	17	5	8	np	np	316
May	210	45	20	5	9	np	np	306
June	213	51	20	6	13	8	5	315
July	215	49	18	4	18	np	np	319
August	184	43	16	5	9	5	5	267
September	179	47	19	4	12	np	np	272
October	184	46	21	6	7	np	np	283
November	164	42	16	4	12	5	9	251
December	188	46	18	4	8	np	np	280

np not available for publication but included in totals where applicable, unless otherwise indicated

COMMERCIAL AND LEASE FINANCE COMMITMENTS, For Plant and Equipment(a): **Original**

<i>Month</i>	<u>COMMERCIAL FINANCE(b)</u>			<u>LEASE FINANCE</u>	<u>ALL PLANT AND EQUIPMENT FINANCE</u>
	<i>Transport equipment</i>	<i>Other plant and equipment</i>	<i>Total</i>	<i>Total</i>	<i>Total</i>
	\$m	\$m	\$m	\$m	\$m
2007					
December	238	531	769	318	1 087
2008					
January	77	319	395	277	672
February	87	419	506	290	797
March	101	404	505	287	792
April	107	518	625	241	866
May	99	397	496	260	756
June	212	568	780	439	1 219
July	149	391	540	261	801
August	96	454	550	258	809
September	69	420	489	235	724
October	178	546	724	270	994
November	245	388	634	218	851
December	209	474	683	324	1 007

(a) Excludes motor vehicles (see tables 9 and 10).

(b) Excludes revolving credit.

LEASE FINANCE COMMITMENTS, For Plant and Equipment: **Original**

Month	Transport equipment (a)	Construction and earthmoving equipment	Agricultural machinery and equipment	Manu- facturing equipment	Electronic data processing equipment	Office machines	Shop and office furniture, fittings and equipment	Other goods	Total
	\$m	\$m	\$m	\$m	\$m	\$m	\$m	\$m	\$m
2007									
December	9	35	11	16	93	49	32	75	318
2008									
January	14	41	15	5	103	40	12	47	277
February	7	64	12	13	63	51	25	55	290
March	19	29	11	8	83	58	21	58	287
April	8	24	11	13	62	49	14	60	241
May	6	44	17	15	47	54	21	55	260
June	np	51	28	20	80	58	41	np	439
July	8	30	6	12	69	61	29	46	261
August	17	14	6	12	100	50	16	43	258
September	20	23	8	10	50	54	20	51	235
October	np	36	13	20	57	55	19	np	270
November	6	25	11	17	43	52	19	45	218
December	9	29	19	21	80	62	41	63	324

np not available for publication but included in totals where applicable, unless otherwise indicated

(a) Excludes motor vehicles (see tables 9 and 10).

EXPLANATORY NOTES

INTRODUCTION

- 1** This publication presents statistics on finance commitments made by significant lenders for the purposes of secured housing finance for owner occupation, other personal finance, commercial finance and lease finance.
- 2** *Secured housing finance for owner occupation* is secured finance to individuals for the purchase or construction of dwellings for owner occupation, and for alterations and additions to existing owner occupied dwellings. Refinancing involving a change of lender is also included, while refinancing with the same lender is excluded from all estimates.
- 3** *Personal finance*, other than secured housing finance for owner occupation, is finance provided to individuals for their personal, non-business, use. Both fixed loans and revolving credit finance are included.
- 4** *Commercial finance* is finance provided to individuals and corporations for business or investment purposes, including for the construction or purchase of dwellings for rental or resale. Fixed loans, revolving credit and commercial hire purchase are included.
- 5** *Lease finance* includes finance and leverage leases. Operating lease finance statistics are provided as spreadsheets on Details tab of this issue.

SCOPE

- 6** Finance commitments made by the following types of lenders are included:
 - Banks
 - Permanent building societies
 - Credit unions/cooperative credit societies
 - Life or general insurance companies
 - General government enterprises
 - Superannuation funds
 - Securitiser of mortgage assets (wholesale lenders) which provide funds to borrowers through a retail intermediary (e.g. mortgage originators)
 - Other Registered Financial Corporations (RFCs).

COVERAGE

- 7** The statistics cover all bank commitments, and all commitments for secured housing finance for owner occupation made by permanent building societies. Of the remaining commitments, the largest lenders for each of secured housing finance for owner occupation, other personal finance, commercial finance and lease finance are covered, so that when calculated separately for each of the four broad categories of purpose finance, at least 95% of Australia-wide finance commitments and at least 90% of each state's finance commitments are covered. While many lenders other than banks are not covered, at least 70% coverage is maintained for all published lender types (including the Other Lenders series and Other Lessors series).
- 8** An annual collection is conducted to maintain and update the survey coverage. New lenders are included as their lending for any of the four categories of finance becomes sufficiently large.
- 9** From June 2001, the statistics for:
 - secured housing finance for owner occupation cover all commitments by banks and permanent building societies, and commitments by all other lenders which provided more than \$50m for housing finance in 2000
 - personal finance cover all commitments by banks, and commitments by all other lenders which provided more than \$96m for personal finance in 2000.
- 10** From June 2002, the statistics for:
 - commercial finance cover all commitments by banks, and commitments by all other lenders which provided more than \$484m for commercial finance in 2001
 - lease finance cover all commitments by banks, and commitments by all other lenders which provided funds of more than \$31m for lease finance in 2001.

EXPLANATORY NOTES *continued*

COVERAGE *continued*

11 Additional smaller lenders are also covered where it is necessary to maintain collection coverage (as specified in paragraph 7).

SOURCES

12 For banks, credit cooperatives, building societies and RFCs, the statistics in this publication are currently derived from returns submitted to the Australian Prudential Regulation Authority (APRA). The Financial Sector (Collection of Data) Act 2001 facilitates the collection of statistical data from the financial sector, with APRA established as the central point for collection of both prudential and statistical data. In October 2001, APRA implemented new reporting forms for building societies and credit cooperatives. New reporting forms were implemented for banks in March 2002, and for RFCs in March 2003. APRA commenced collecting loan commitments data from banks, credit cooperatives, building societies in July 2002 and from RFCs in March 2003.

13 Secured housing finance commitments for owner occupied housing from banks, building societies and credit cooperatives are derived from form *ARF 392.0 Housing Finance* collected by APRA. Personal finance commitments from these lenders are sourced from the *ARF 394.0 Personal Finance*. Commercial finance commitments from these lenders are sourced from the *ARF 391.0 Commercial Finance* and from the *ARF 394.0 Personal Finance* for fixed loans for personal investment purposes. Lease finance commitments are sourced from the *ARF 393.0 Lease Finance*.

14 Finance commitments for RFCs are collected on the *RRF 391.0 Commercial Finance* (commercial finance commitments), *RRF 392.0 Housing Finance* (secured housing finance commitments for owner occupied housing), *RRF 393.0 Lease Finance* (lease finance commitments) and *RRF 394.0 Personal Finance* (personal finance commitments and commercial finance commitments).

15 Electronic versions of the forms and instructions for ADIs are available on the APRA web site at <http://www.apra.gov.au/Statistics/Reporting-forms-and-instructions-exclude-Basel-II.cfm>. For RFCs, these are available at: <http://www.apra.gov.au/rfc/>.

16 All other institutions, including securitisation vehicles, are collected directly by the ABS.

REVISIONS

17 Revisions to previously published statistics are included in the publication as they occur.

18 Changes in the classification of lenders (e.g. the conversion of a permanent building society to a bank) are reflected in the Lender series from the month of the change. Data for earlier periods for such lenders are not reclassified. Details of the establishment of new banks are published in the Reserve Bank of Australia's monthly *Bulletin* in the section on Technical Notes to Tables.

SEASONAL ADJUSTMENT

19 Seasonal adjustment is a means of removing the estimated effects of normal seasonal variation and 'trading day effects'. A 'trading day effect' reflects the varying amounts of activity on different days of the week and the different number of days of the week in any month (i.e. the number of Sundays, Mondays, etc.). This effect may be partly caused by the reporting practices of the lenders. Adjustment is also made for Easter which may affect the March and April estimates differently. Trading day effects are removed from the original estimates prior to the seasonal adjustment process. Seasonal adjustment does not remove the effect of irregular or non-seasonal influences (e.g. a change in interest rates) from the seasonally adjusted series.

20 The lending finance series uses a concurrent seasonal adjustment methodology to derive the seasonal adjustment factors. This means that original estimates available at the current reference month are used to estimate seasonal factors for the current and previous months. As a result of this methodology, the seasonally adjusted and trend

EXPLANATORY NOTES *continued*

SEASONAL ADJUSTMENT

continued

estimates for earlier periods can be revised each month. However, in most instances, the only noticeable revisions will be to the previous month and the same month a year ago.

21 Autoregressive integrated moving average (ARIMA) modelling can improve the revision properties of the seasonally adjusted and trend estimates. ARIMA modelling relies on the characteristics of the series being analysed to project future period data. The projected values are temporary, intermediate values, that are only used internally to improve the estimation of the seasonal factors. The projected data do not affect the original estimates and are discarded at the end of the seasonal adjustment process. The lending finance collection uses an individual ARIMA model for 96% of the series in this publication. The ARIMA model is assessed as part of the annual reanalysis. For more information on ARIMA modelling see Feature article: Use of ARIMA modelling to reduce revisions in the October 2004 issue of *Australian Economic Indicators* (cat. no. 1350.0).

TREND ESTIMATES

22 Smoothing seasonally adjusted series reduces the impact of the irregular component of the seasonally adjusted series and creates trend estimates. These trend estimates are derived by applying a 13 term Henderson-weighted moving average to all but the last six months of the respective seasonally adjusted series. Trend series are created for the last six months by applying surrogates of the Henderson moving average to the seasonally adjusted series. For further information, refer to *Information Paper: A Guide to Interpreting Time Series—Monitoring Trends: An Overview* (cat. no. 1349.0) or contact the Assistant Director, Time Series Analysis on Canberra (02) 6252 6345 or by email at <time.series.analysis@abs.gov.au>.

23 While the smoothing technique described in paragraph 22 enables trend estimates to be produced for the latest few months, it does result in revisions to the trend estimates as new data become available. Generally, revisions become smaller over time and, after three months, usually have a negligible impact on the series. Changes in the original data and re-estimation of seasonal factors may also lead to revisions to the trend.

EFFECTS OF ROUNDING

24 Where figures have been rounded, discrepancies may occur between sums of the component items and totals. Percentage changes presented in the commentary are based on unrounded data and may differ slightly from percentage changes calculated from the rounded data presented in the tables in this publication.

ABS DATA AVAILABLE ON REQUEST

25 Estimates for months prior to those shown in this publication and more detailed series are available in spreadsheet format from the Australian Bureau of Statistics (ABS) web site. For more information, contact the ABS National Information and Referral Service on 1300 135 070.

RELATED PUBLICATIONS

26 Users may also wish to refer to the following ABS releases:

- *Housing Finance, Australia* (cat. no. 5609.0)
- *Assets and Liabilities of Australian Securitizers* (cat. no. 5232.0.0.55.001)
- *Building Approvals, Australia* (cat. no. 8731.0)
- *Dwelling Unit Commencements, Australia, Preliminary* (cat. no. 8750.0) - issued monthly
- *Private New Capital Expenditure and Expected Expenditure, Australia* (cat. no. 5625.0)
- *Sales of New Motor Vehicles, Australia Electronic Publication* (cat. no. 9314.0).

27 In addition, the Reserve Bank of Australia (RBA) produces the monthly *Reserve Bank of Australia Bulletin*, the tables of which are available on the RBA web site <<http://www.rba.gov.au>>. The Australian Prudential Regulation Authority (APRA) also publishes a range of finance statistics on its web site <<http://www.apra.gov.au>>.

EXPLANATORY NOTES *continued*

RELATED PUBLICATIONS *continued*

28 Current publications produced by the ABS are listed in the *Catalogue of Publications and Products* (cat. no. 1101.0). The *Catalogue* is available from any ABS office or the ABS web site <<http://www.abs.gov.au>>. The ABS also issues a daily Release Advice on the web site which details products to be released in the week ahead.

GLOSSARY

Agricultural machinery and equipment	Includes tractors, tillage implements, seeding, planting and fertilising equipment, agricultural mowers, harvesters, etc.
Alterations and additions	Comprises all structural and non-structural changes which are integral to the functional and structural design of a dwelling. Examples are garages, carports, pergolas, reroofing, recladding, etc. Alterations and additions do not include swimming pools, ongoing repairs, or maintenance and home improvements which do not involve building work.
Commitment	Is a firm offer of finance. It either has been, or is normally expected to be, accepted. Commitments accepted and cancelled in the same month are included. Commitments to non-residents are excluded.
Construction and earth moving equipment	Includes concrete mixers and pumpers, dozers, graders, mobile cranes, crawler tractors, dumpers, road rollers, earth packers, scarifiers, rippers, etc.
Construction of dwellings	Comprises commitments made to individuals to finance, by way of progress payments, the construction of owner occupied dwellings.
Debt consolidation	For personal finance, comprises commitments whose principle purpose is to consolidate and pay out amounts owing by the borrower to third parties.
Dwelling	Is a single self-contained place of residence such as a detached or semidetached house, a terrace house, a flat, home unit, town house, etc. which includes bathing and cooking facilities.
Electronic data processing equipment	Includes computers, computer peripherals, data entry devices, word processing machines, etc.
Established dwelling	Is a dwelling that has been completed for 12 months or more prior to the lodgement of a loan application, or has been previously occupied.
Finance lease	Refers to the leasing or hiring of tangible assets under an agreement, other than a hire purchase agreement, which substantially transfers from the lessor to the lessee all the risks and benefits incident to ownership of the asset without transferring the legal ownership.
Fixed loans	Generally involve: <ul style="list-style-type: none">■ a commitment for a fixed amount for a fixed period for a specific purpose■ a schedule of repayments over a fixed period■ repayments which reduce the liability of the borrower but do not act to make further finance available.
Heavy trucks	Comprises all vehicles with a gross combination mass rating in excess of 3.5 tonnes, including prime movers registered without trailers.
Light trucks	Comprises vehicles constructed primarily for the carriage of goods which do not exceed 3.5 tonnes gross vehicle mass such as utilities, panel vans, trucks, cab-chassis, forward control vans and four-wheel drives used to carry goods.
Manufacturing equipment	Includes all plant and equipment used in the manufacture of goods except motor vehicles such as forklifts, work trucks and tractors.
Motor cars and station wagons	Includes cars, station wagons, four-wheel drive and forward control passenger vehicles with up to nine seats (including the driver).
Motorcycles	Includes two and three wheeled motorcycles and mopeds, scooters and motorcycles with side cars.
New dwelling	Is a dwelling that has been completed within 12 months of the lodgement of a loan application, and the borrower will be the first occupant.
Office machines	Includes telephone systems (including PABX equipment), facsimile machines, cash registers, photocopiers, etc.

GLOSSARY *continued*

Purpose	Of the loan is that specified by the borrower. Where possible multiple purpose loans are split and each component is reported in the appropriate purpose category. Otherwise the whole loan is classified to the major purpose.
Refinancing	For personal and commercial finance, represents a commitment to refinance an existing loan. For secured housing finance, only those loans where the refinancing lender is not the original lender and the security is unchanged are included. The refinancing of a loan to fund a change of residence is treated as a new lending commitment.
Revolving credit	Generally has the following characteristics: <ul style="list-style-type: none">■ a commitment for a credit or borrowing limit is given for a specific period after which the commitment is reviewed■ the extent of the borrowing used at any time during the period may be for any amount up to the authorised limit■ repayments (other than of charges and interest) made during the period reduce the extent of the borrowing used and thereby increase the amount of unused credit available up to the authorised limit. Examples include credit cards, lines of credit and approved overdrafts.
Secured credit limits	Includes overdrafts, lines of credit, credit cards, etc. backed by a mortgage or other assets owned by the borrower.
Secured housing finance	Comprises all secured commitments to individuals for the construction or purchase of dwellings for owner occupation, regardless of type of security. Commitments for housing that will be occupied by persons other than the owner(s) are excluded.
Total credit limits at end of month	Comprises total approved credit limits available at the end of the reference month. In principle, this can be derived by adding new and increased lending commitments during the month less cancellations and reductions of credit limits during the month to the balance of credit limits at the end of the previous month. In practice, however, revisions and other adjustments (such as the transfer of an existing fixed credit facility) will mean that such a derivation is inexact.
Wholesale finance	Comprises finance for the purchase of goods by retailers and wholesalers.

FOR MORE INFORMATION . . .

INTERNET **www.abs.gov.au** the ABS website is the best place for data from our publications and information about the ABS.

INFORMATION AND REFERRAL SERVICE

Our consultants can help you access the full range of information published by the ABS that is available free of charge from our website. Information tailored to your needs can also be requested as a 'user pays' service. Specialists are on hand to help you with analytical or methodological advice.

PHONE 1300 135 070

EMAIL client.services@abs.gov.au

FAX 1300 135 211

POST Client Services, ABS, GPO Box 796, Sydney NSW 2001

FREE ACCESS TO STATISTICS

All statistics on the ABS website can be downloaded free of charge.

WEB ADDRESS www.abs.gov.au